



Property: D1050LIM-003

NEW CONSTRUCTION: Modern semi-detached house near the dream beach

Semi-detached, Cala Romàntica

394.000,00 €

Data overview

PropNo	D1050LIM-003
Type of property	House
Kind of property	Semi-detached
Type of use	Residential
Type of commercialization	Purchase
Postcode	07680
City	Cala Romàntica
State	Balearic islands
Additional geographical information	Cala Romantica
Constructed area	approx. 120 sqm
Living area	approx. 75 sqm
constructed area	approx. 120 sqm
Number of bedrooms	2
Number of bathrooms	2
Number of rooms	3
Plot size	approx. 237 sqm
Balcony/terrace areas	approx. 45 sqm
Garden area	approx. 138 sqm
Waste water connection	Yes
Year of construction	2025
Number of buildings	90
Number of residential units	159
Type of parking space	Outdoor parking space
Swimmingpool	Yes
Swimmingpool (indoor)	Yes
Gym / Fitnessbereich	Yes
Trockensauna	Yes
Kitchen	Fitted kitchen, Open kitchen
Heating type	Air Conditioning hot / cold (central)
Floor	Stone

Window	Double glazing
Cable Sat TV	Yes
Balcony	Yes
Terrace	Yes
Alignment of balcony/terrace	West
private garden	Yes
Parking spaces	1 Private parking space
Year of construction	2025
Condition	Erstbezug / Neubau
Purchase price	394.000,00 €

Highlights

New construction, first occupancy, semi-detached house, modern design, private swimming pool (optional), private garden, living/dining area, modern kitchen, utility room, 2 bedrooms, 2 bathrooms, fitted wardrobes, central air conditioning hot/cold, underfloor heating bathrooms (optional), tiles, double-glazed windows (aluminum), security entrance door, non-slip tiles outside, terrace, balcony, private parking space, large communal pool, clubhouse with indoor pool + sauna + gym + gastrobar + cinema, close to the beach

Description

The semi-detached house (house type E) offers a living/dining area with open kitchen, utility room, a bedroom and a bathroom on the first floor on a constructed area of approx. 120m² (approx. 75m² constructed living space). On the upper floor there is a further bedroom with bathroom and two balconies. The highlight is the beautiful outdoor area with private swimming pool (optional), garden (approx. 138m²) and terraces (approx. 45m²). The house has a private parking space. The communal area offers a swimming pool (outdoor), swimming pool (indoor), sauna, gym, gastro bar, cinema and landscaped gardens.

Planned completion: 1st quarter 2026

Possible additional options at extra cost:

- small pool in private garden (+ 18.750€)
- Large pool in the private garden (+ €23,500)
- landscaped garden with lawn and other plants

The photos shown here are photos of the show house or digital 3D views (renderings).

On request, we will send you further documents, such as plans, information on construction quality, etc. .

NOTE: VAT of 10% of the purchase price is payable on the purchase of this new-build property. Also to be paid by the buyer are the notary, land registry and administration costs incurred with the purchase.

Location

The semi-detached house is located in a quiet residential area of Cala Romantica in the southeast of Mallorca. The beautiful beach is only 1.5 km away and the restaurants and supermarket in the village are also within easy reach. The town of Porto Cristo with its beautiful harbor and a variety of restaurants and shops is only 10 km away. The airport in Palma is approx. 50 minutes away by car.

Other data

This newly built semi-detached house in Cala Romantica (near Porto Cristo) is offered to you by your real estate agent Holzmüller - Real Estate Mallorca (exclusive partner of the real estate portals APART BALEAR and LUXUSIMMOMALLORCA.COM). For further questions you can reach us at info@holzmueller-mallorca.com or by Whatsapp / phone at 0034 603 367 779.

The details are based on information provided by the seller and are passed on by us without assuming any liability. We will of course check this information before any sale by obtaining an extract from the land register.

Images



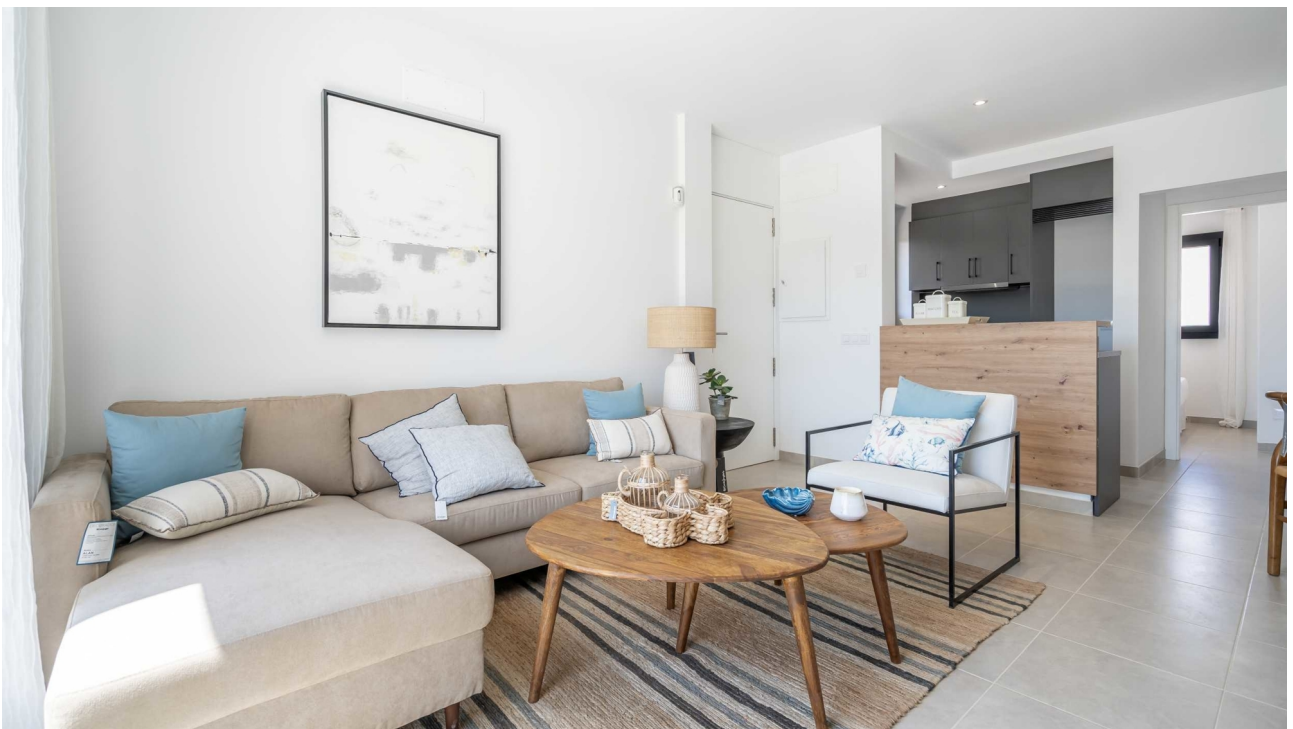
House (Showhouse)



Entrance / garden (Showhouse)



Dining area (Showhouse)



Living (Showhouse)



Kitchen (Showhouse)



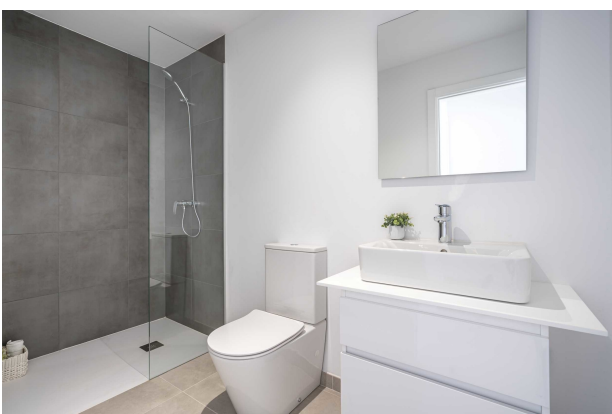
Terrace 1 (Showhouse)



Swimmingpool (Showhouse)



Bedroom 1 (Showhouse)



Bath 1 (Showhouse)



Living (Showhouse)



Bedroom 2 (Showhouse)



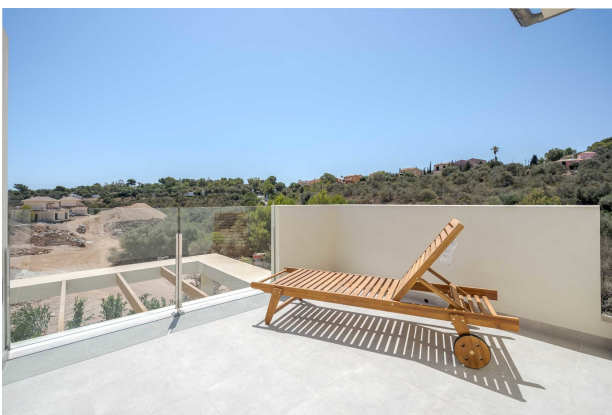
Terrace 2 (Showhouse)



Bedroom 2 (Showhouse)



Bath 2 (Showhouse)



Terrace 3 (Showhouse)



House Type E (Rendering)



Parking (Rendering)



Swimmingpool Community (Rendering)

Floor Plan

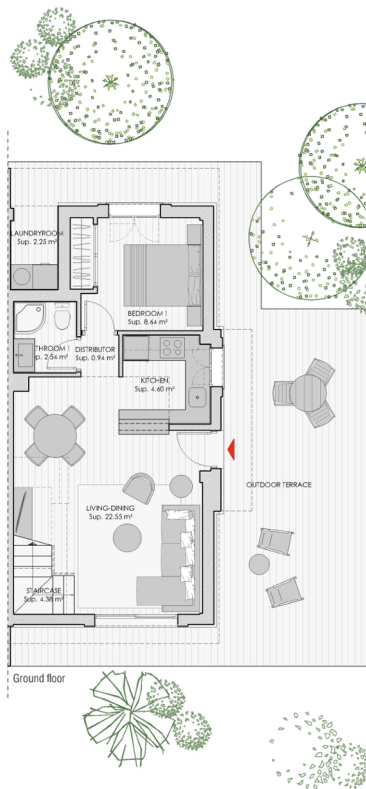
APARTBALEAR
Real Estate Agent Group



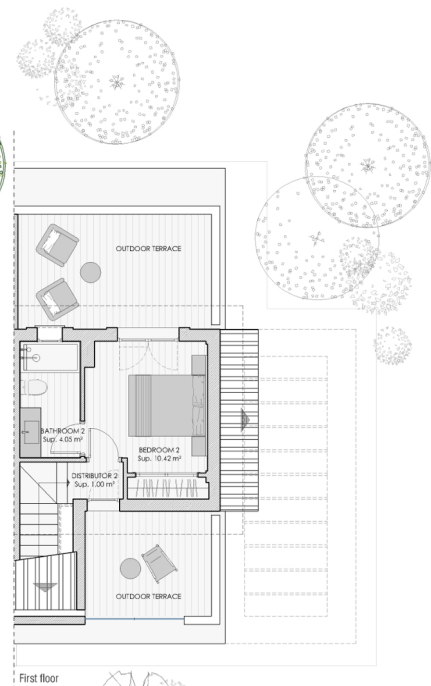
HOUSE MI-04-E

2 2 1 75 m² 237 m²

Useful area	
Living-dining	22,55 m ²
Kitchen	4,60 m ²
Distributor	0,94 m ²
Bedroom 1	8,64 m ²
Bathroom 1	2,54 m ²
Laundryroom	2,25 m ²
Staircase	4,38 m ²
Distributor 2	1,00 m ²
Bedroom 2	10,42 m ²
Bathroom 2	4,05 m ²
Total useful interior area	61,37 m ²
Built area	
Closed built area	75,00 m ²
Terrace built area	45,02 m ²
Total built area	120,02 m ²
Garden area	138,45 m ²
Plot area	237,12 m ²



Ground floor



First floor



003-MI-04-E

Your contact person

Mr. Marcel Holzmüller
HOLZMÜLLER - Real Estate Mallorca
Camí des Comellar 7
07157 Port d'Andratx

Mobile: 0034 603367779

E-Mail: info@holzmueller-mallorca.com

Legal notice

We cannot take any guarantee for the property details as they are not provided by us. This expose is strictly for your personal use. Passing it on to a third party is expressly subject to our agreement and does not affect our right to commission on the closure of any contract. All discussions and correspondence must be carried out via our offices. In cases of violation of this we reserve the right to claim damages to the value of our right to commission. A pre-sale is not excluded.